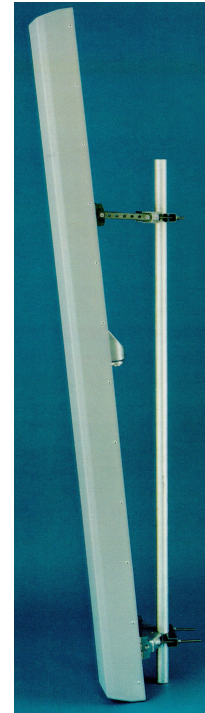




## DUAL POLARISED SIDE-BY-SIDE GSM ANTENNA GSM900/XP/85/16/VET TYPE 5107

- ❑ FOUR CONNECTOR PORTS
- ❑ TWO SIDE BY SIDE PANELS
- ❑ VARIABLE ELECTRICAL TILT
- ❑ RETROFIT RET

A number of models provide gain & fixed/variable electrical downtilt to exactly suit the location. Superior circuit design coupled with advanced manufacturing techniques guarantee consistent product quality, with excellent intermodulation performance, product quality & performance.



### TECHNICAL SPECIFICATION ( EACH SECTOR )

	SECTOR A	SECTOR B
<b>Frequency</b>	806-960MHz	806-960MHz
<b>Gain</b>	16.1dBi	16.1dBi
<b>VSWR</b>	1.5:1 max	1.5:1 max
<b>Horizontal Beamwidth</b>	90°	90°
<b>Vertical Beamwidth</b>	8.0°	8.0°
<b>Polarisation</b>	±45°	±45°
<b>Electrical Downtilt</b>	2-7°	2-7°
<b>Upper Sidelobe Suppression</b>	>15dB	>15dB
<b>Front-to-Back Ratio</b>	>25dB	>25dB
<b>Isolation Between Ports</b>	>30dB	>30dB
<b>Power Rating</b>	300W	300W
<b>Connectors</b>	4 x 7/16 DIN female	
<b>Impedance</b>	50Ω	
<b>Lightning Protection</b>	DC grounded	
<b>Dimensions (LxWxD)</b>	2330 x 500 x 180 mm	
<b>Wind Loading</b>	900N @ 45m/s	
<b>Operational Wind Speed</b>	45m/s	
<b>Survival Wind Speed</b>	56m/s	
<b>Weight (antenna only)</b>	17.5kg	
<b>Temperature</b>	-55° to +70°C	
<b>Bracket Size</b>	To suit pole 48-115mm	
<b>Bracket Downtilt</b>	0-10° in 2° steps	

