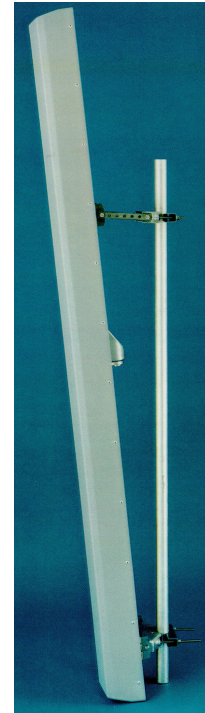


DUAL POLARISED SIDE-BY-SIDE GSM ANTENNA GSM900/XP/65/17/VET TYPE 5106

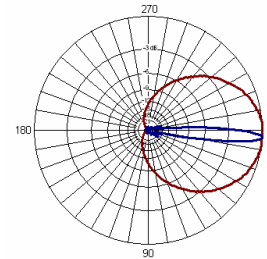
- ❑ FOUR CONNECTOR PORTS
- ❑ TWO SIDE BY SIDE PANELS
- ❑ VARIABLE ELECTRICAL TILT
- ❑ RETROFIT RET

A number of models provide gain & fixed/variable electrical downtilt to exactly suit the location. Superior circuit design coupled with advanced manufacturing techniques guarantee consistent product quality, with excellent intermodulation performance, product quality & performance.



TECHNICAL SPECIFICATION (EACH SECTOR)

	SECTOR A	SECTOR B
Frequency	806-960MHz	806-960MHz
Gain	17.3dBi	17.3dBi
VSWR	1.5:1 max	1.5:1 max
Horizontal Beamwidth	65°	65°
Vertical Beamwidth	8.0°	8.0°
Polarisation	±45°	±45°
Electrical Downtilt	2-7°	2-7°
Upper Sidelobe Suppression	>15dB	>15dB
Front-to-Back Ratio	>25dB	>25dB
Isolation Between Ports	>30dB	>30dB
Power Rating	300W	300W
Connectors	4 x 7/16 DIN female	
Impedance	50Ω	
Lightning Protection	DC grounded	
Dimensions (LxWxD)	2330 x 500 x 180 mm	
Wind Loading	900N @ 45m/s	
Operational Wind Speed	45m/s	
Survival Wind Speed	56m/s	
Weight (antenna only)	17.5kg	
Temperature	-55° to +70°C	
Bracket Size	To suit pole 48-115mm	
Bracket Downtilt	0-10° in 2° steps	



INOTEK ANTENNAS LTD

54, Ashdown Road, Chandler's Ford, Eastleigh, Hampshire, SO53 5QJ United Kingdom

Tel: +44 (0) 2380 254289, Fax: +44 (0) 191 3920133, email: sales@inotekantennas.com, www.inotekantennas.com

Inotek Antennas reserve the right to vary in detail from the description and specification in this publication. Issue: 04/07