



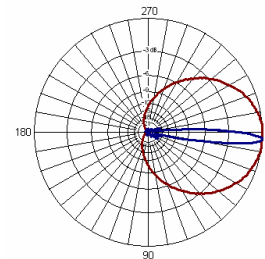
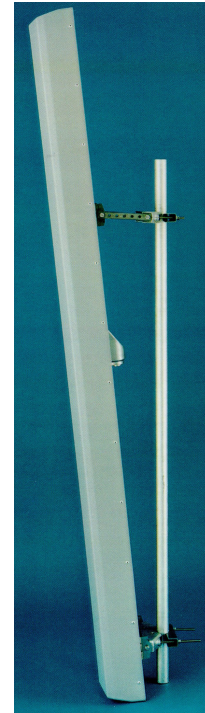
## DUAL POLARISED GSM ANTENNA GSM900/XP/85/16/VET TYPE 5105

- ❑ TWO CONNECTOR PORTS
- ❑ VARIABLE ELECTRICAL TILT
- ❑ RETROFIT RET

A number of models provide gain & fixed/variable electrical downtilt to exactly suit the location. Superior circuit design coupled with advanced manufacturing techniques guarantee consistent product quality, with excellent intermodulation performance, product quality & performance.

### TECHNICAL SPECIFICATION

<b>Frequency</b>	806-960MHz
<b>Gain</b>	16.1dBi
<b>VSWR</b>	1.5:1 max
<b>Horizontal Beamwidth</b>	90°
<b>Vertical Beamwidth</b>	8.0°
<b>Polarisation</b>	±45°
<b>Electrical Downtilt</b>	2-7°
<b>Upper Sidelobe Suppression</b>	>15dB
<b>Front-to-Back Ratio</b>	>25dB
<b>Isolation Between Ports</b>	>30dB
<b>Power Rating</b>	300W
<b>Connectors</b>	2 x 7/16 DIN female
<b>Impedance</b>	50Ω
<b>Lightning Protection</b>	DC grounded
<b>Dimensions (LxWxD)</b>	2330 x 253 x 180 mm
<b>Wind Loading</b>	900N @ 45m/s
<b>Operational Wind Speed</b>	45m/s
<b>Survival Wind Speed</b>	56m/s
<b>Weight (antenna only)</b>	17.5kg
<b>Temperature</b>	-55° to +70°C
<b>Bracket Size</b>	To suit pole 48-115mm
<b>Bracket Downtilt</b>	0-10° in 2° steps



INOTEK ANTENNAS LTD

54, Ashdown Road, Chandler's Ford, Eastleigh, Hampshire, SO53 5QJ United Kingdom

Tel: +44 (0) 2380 254289, Fax: +44 (0) 191 3920133, email: sales@inotekantennas.com, www.inotekantennas.com

Inotek Antennas reserve the right to vary in detail from the description and specification in this publication. Issue: 04/07