

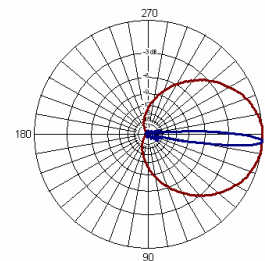
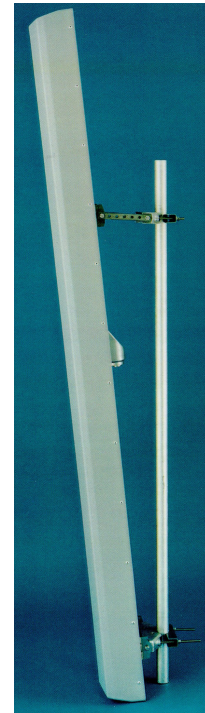
DUAL POLARISED ANTENNA GSM900/XP/65/17/4 TYPE 5104

- ❑ TWO CONNECTOR PORTS
- ❑ OTHER DOWNTILT OPTIONS AVAILABLE – 0, 2, 6

A number of models provide gain & fixed electrical downtilt to exactly suit the location. Superior circuit design coupled with advanced manufacturing techniques guarantee consistent product quality, with excellent intermodulation performance, product quality & performance.

TECHNICAL SPECIFICATION

Frequency	870-960MHz
Gain	17.5dBi
VSWR	1.5:1 max
Horizontal Beamwidth	65°
Vertical Beamwidth	8.1°
Polarisation	+45° and -45°
Fixed Electrical Downtilt	4°
Upper Sidelobe Suppression	>17dB
Front-to-Back Ratio	>25dB
Isolation Between Ports	>30dB
Power Rating	400W
Connectors	2 x 7/16 DIN female
Impedance	50Ω
Lightning Protection	DC grounded
Dimensions (LxWxD)	2330 x 253 x 180 mm
Wind Loading	900N @ 45m/s
Operational Wind Speed	45m/s
Survival Wind Speed	56m/s
Weight (antenna only)	16.5kg
Temperature	-55° to +70°C
Bracket Size	To suit pole 48-115mm
Bracket Downtilt	0-10° in 2° steps



GSM900

INOTEK ANTENNAS LTD

54, Ashdown Road, Chandler's Ford, Eastleigh, Hampshire, SO53 5QJ United Kingdom

Tel: +44 (0) 2380 254289, Fax: +44 (0) 2380 254 289, email: sales@inotekantennas.com, www.inotekantennas.com

Inotek Antennas reserve the right to vary in detail from the description and specification in this publication. Issue: 03/09