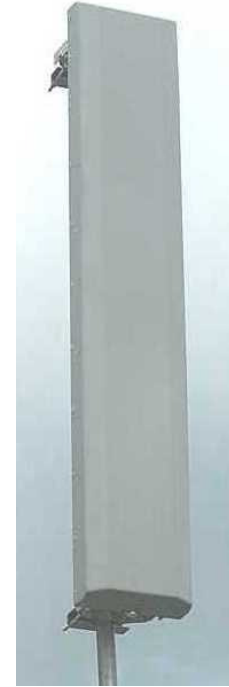




**STACKED DUAL POLARISED PANEL ANTENNA
BROADBAND FIXED WIRELESS ACCESS
2 x 16.2dBi 90 DEGREE
3.5GHZ X-POL PANEL
(TYPE 2313)**

- ❑ SINGLE BAND 3.5GHZ APPLICATIONS
- ❑ TWO STACKED ANTENNAS FOR INCREASED CAPACITY
- ❑ NULL FILL AND UPPER SIDELOBE SUPPRESSION

A very competitively priced stacked panel antenna with an extremely low component count and one-piece PCB resulting in consistently high product quality and reliability.



TECHNICAL SPECIFICATION (PER PANEL)

Frequency	3400-3600 MHz
Gain	16.2dBi
VSWR	1.4:1
Horizontal Beamwidth	90°
Vertical Beamwidth	6.5°
Fixed Electrical Downtilt	2°
Upper Sidelobe Suppression	>18dB
Null Fill	<17dB
Front-to-Back Ratio	>30dB
Isolation	>30dB
Power Rating	100W
Connectors	4 x 7/16 DIN female at rear
Dimensions (LxWxD)	1916 x 290 x 133 mm
Bracket	Pole size 48 – 120 mm
Weight	11.5Kg antenna, 4.5Kg brackets
Bracket Tilt	± 10° in 1° steps
Survival Wind Speed	56m/s
Operational Wind Speed	45m/s
Frequency	3400-3600 MHz

