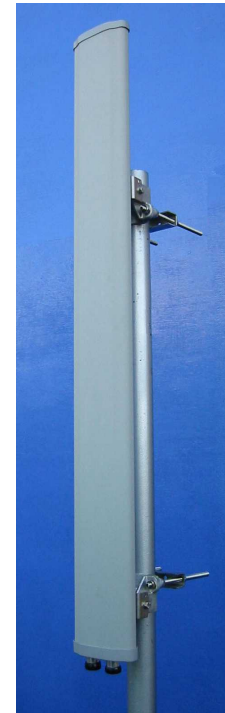




## DUAL POLARISED PANEL ANTENNA BROADBAND FIXED WIRELESS ACCESS 21.5dBi 45 DEGREE 3.5GHZ X-POL PANEL (TYPE 2310)

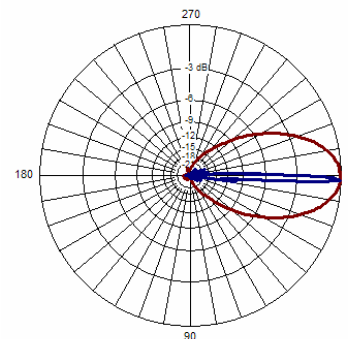
- ❑ SINGLE BAND 3.5GHZ APPLICATIONS
- ❑ HIGH GAIN
- ❑ ULTRA LOW PROFILE RADOME

A very competitively priced high gain panel antenna with an extremely low component count and one-piece PCB resulting in consistently high product quality and reliability.



### TECHNICAL SPECIFICATION

Frequency	3400-3500GHz
Gain	21.5dBi
VSWR	1.4:1
Horizontal Beamwidth	45°
Vertical Beamwidth	3.5°
Fixed Electrical Downtilt	2°
Upper Sidelobe Suppression	>18dB
Null Fill	<17dB
Front-to-Back Ratio	>30dB
Isolation	>30dB
Power Rating	100W
Connectors	2 x 7/16 DIN female
Dimensions (LxWxD)	1380 x 142 x 57 mm
Bracket	Pole size 48 – 120 mm
Bracket Tilt	± 10°
Operational Wind Speed	45m/s
Survival Wind Speed	56m/s



INOTEK ANTENNAS LTD

54, Ashdown Road, Chandler's Ford, Eastleigh, Hampshire, SO53 5QJ United Kingdom

Tel: +44 (0) 2380 254289, Fax: +44 (0) 191 3920133, email: sales@inotekantennas.com, www.inotekantennas.com

Inotek Antennas reserve the right to vary in detail from the description and specification in this publication. Issue: 04/07