



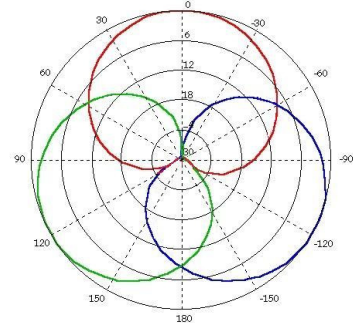
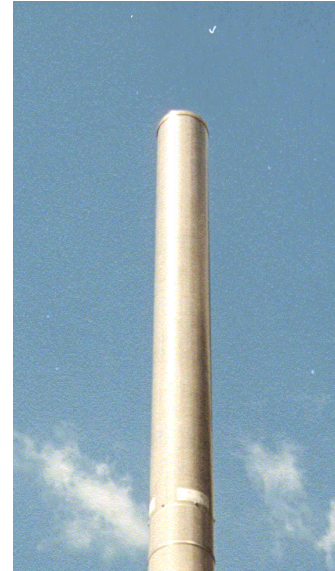
DUAL POLARISED TRI-SECTOR ANTENNA UMTS XP/65°/18/2, 4, 6, 8 or 10 Type 2291

- ❑ TRI-SECTOR MONOPOLE MOUNTING
- ❑ DUAL POLARISED
- ❑ 3 x 65 DEGREE SECTORS

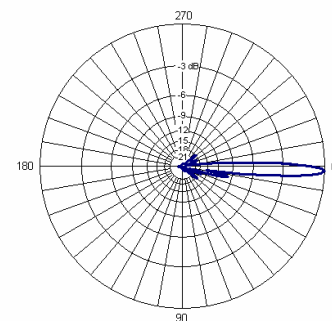
The antenna system is an array of 3 x 65 degree antennas mounted within a cylindrical radome. The diameter is 167mm, providing a very low profile to ease planning applications. The individual arrays can be supplied with any combination of fixed electrical downtilt to suit the site requirements.

TECHNICAL SPECIFICATION (EACH SECTOR)

Frequency	1900 - 2170MHz
Gain	18dBi
VSWR	1.4:1 max
Horizontal Beamwidth	65°
Vertical Beamwidth	7°
Fixed Electrical Downtilt Options	2°, 4°, 6°, 8° or 10°
Upper Sidelobe Suppression	>18dB
1 st Null Fill Below Horizon	<18dB
Front-to-Back Ratio	>25dB
Isolation	30dB
Power Rating	200W
Impedance	50Ω
Connectors (bottom)	6 x 7/16" DIN
Dimensions (L x Ø)	1350 x 168 mm
Operational Wind Speed	45m/s (160Km/h)
Survival Wind Speed	56m/s (200Km/h)
Max Wind Loading (Front)	190N @ 45m/s
Weight	14.5kg
Temperature Range	-40°C to +70°C
Mounting Options	In-line monopole mount



Azimuth plot showing three sectors



Elevation plot, 2 degree downtilt

INOTEK ANTENNAS LTD

54, Ashdown Road, Chandler's Ford, Eastleigh, Hampshire, SO53 5QJ United Kingdom

Tel: +44 (0) 2380 254289, Fax: +44 (0) 191 3920133, email: sales@inotekantennas.com, www.inotekantennas.com

Inotek Antennas reserve the right to vary in detail from the description and specification in this publication. Issue: 04/07