



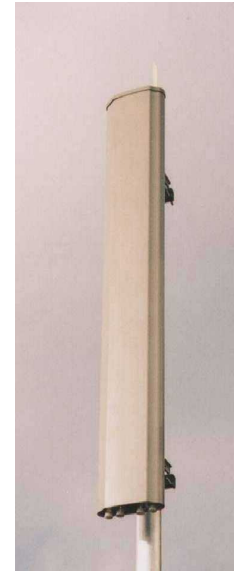
DUAL BAND, DUAL POLARISED ANTENNA UMTS/GSM1800 XP/65/18.5/2, 5 OR 8 TYPE: 2282

- ❑ GSM1800/UMTS APPLICATIONS
- ❑ LOW-PROFILE RADOME
- ❑ SIDELOBE SUPPRESSION

This 'Twin Beam' model has been designed to easily facilitate the addition of UMTS infrastructure to existing GSM1800 networks. It comprises two separate dual-polar antennas side-by-side in a single radome. This configuration reduces visual impact & simplifies installation, providing cost advantages over separate panels.

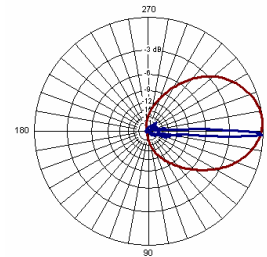
Model variants are available giving different gain & electrical downtilt to exactly match your site requirements. All models feature an extremely low component count and one-piece PCB. This results in consistently high product quality and reliability, having an excellent intermodulation performance.

The mounting brackets enable Tilt or Pan + Tilt options. Two connectors for each band are provided on the base of the unit.

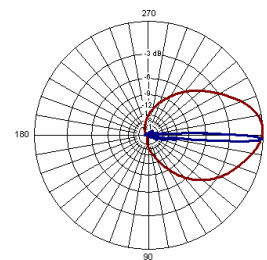


TECHNICAL SPECIFICATION

	GSM1800	UMTS
Frequency	1710 – 1880MHz	1900 - 2170MHz
Gain	18.5dBi	18.5dBi
VSWR	1.4:1 max	1.4:1 max
Horizontal Beamwidth	65°	65°
Vertical Beamwidth	5°	5°
Fixed Electrical Downtilt	2282-122 - 2° 2282-155 - 5° 2282-188 - 8°	2282-122 - 2° 2282-155 - 5° 2282-188 - 8°
Upper Sidelobe Suppression	>16dB	>16dB
1st Null Fill Below Horizon	<18dB	<18dB
Front-to-Back Ratio	>25dB	>25dB
Isolation	30dB	30dB
Power Rating	200W	200W
Connectors (bottom)	02 - 2 x 7/16" DIN back 03 - 2 x 7/16" DIN bottom	02 - 2 x 7/16" DIN back 03 - 2 x 7/16" DIN bottom
Dimensions (LxWxD)	2000 x 275 x 95 mm	
Operational wind speed	45m/s	
Survival wind speed	56m/s	
Max wind loading (Front)	565N @ 45m/s	
Weight	17.5kg	
Temperature Range	-40°C to +70°C	
Bracket Options	Tilt 8° Down 2° Up & Pan (± 45°)	



GSM1800 2 DEGREE DOWN TILT



UMTS 2 DEGREE DOWN TILT