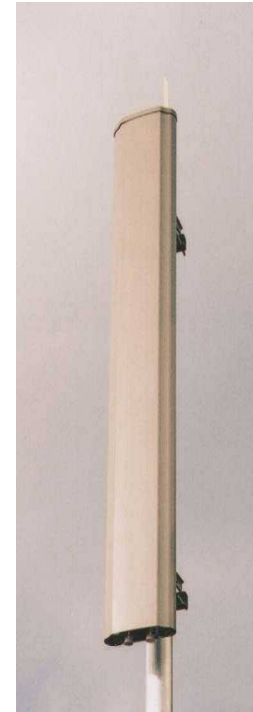


**SINGLE BAND,
DUAL POLARISED ANTENNA
UMTS 33/21/2 or 4
TYPE: 2233**

- ❑ SINGLE-BAND 3G APPLICATIONS
- ❑ LOW-PROFILE RADOME
- ❑ 33 DEGREE BEAMWIDTH

The '3G Series' of panel antennas from Racal Antennas have been designed to easily facilitate the installation of Third Generation cellular infrastructure into new or existing networks. A number of models provide variations in both gain and fixed electrical downtilt to exactly suit the required cell coverage. Slimline radomes reduce visual impact & provide an easily installed, robust enclosure. An extremely low component count and one-piece PCB result in consistently high product quality and reliability, having an excellent intermodulation performance. The mounting brackets enable tilt or pan + tilt options. Two connectors are provided on the base of the unit.



TECHNICAL SPECIFICATION

| | |
|---|--------------------------------------|
| Frequency | 1900 - 2170MHz |
| Gain | 21dBi |
| VSWR | 1.4:1 max |
| Horizontal Beamwidth | 30° |
| Vertical Beamwidth | >5° |
| Fixed Electrical Downtilt Options | 2° or 4° |
| Upper Sidelobe Suppression | >18dB |
| 1st Null Fill Below Horizon | <18dB |
| Front-to-Back Ratio | >30dB @ ± 180° azimuth |
| Isolation | 30dB |
| Power Rating | 200W |
| Connectors | 2 x 7/16" DIN (socket at bottom) |
| Dimensions (LxWxD) | 1700 x 275 x 95 mm |
| Operational Wind Speed | 45m/s |
| Survival Wind Speed | 56m/s |
| Max Wind Loading (Front) | 481 N @ 45m/s |
| Weight (Inc. Bracket) | 15kg |
| Temperature Range | -40°C to +70°C |
| Bracket Options | Tilt 8° down to 2° up Pan +/- 45° |

