



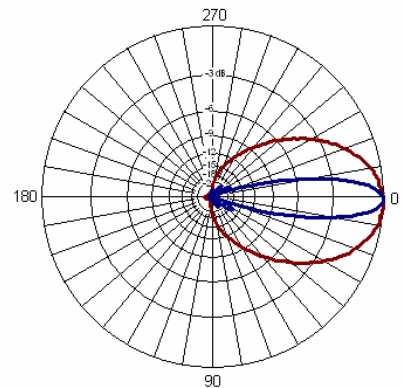
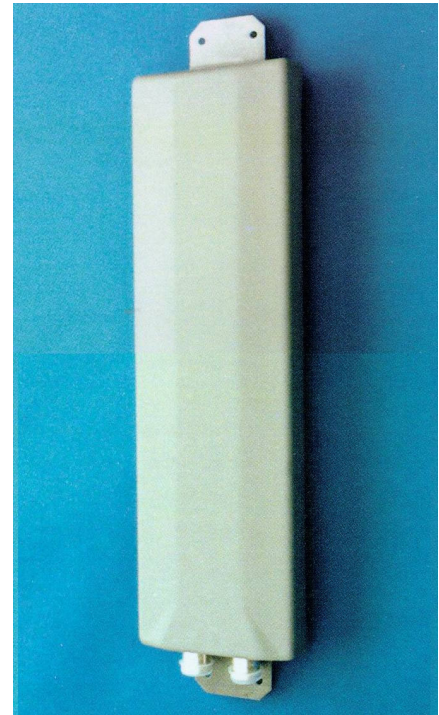
## DUAL POLARISED PANEL ANTENNA GSM1800 XP/60/14/0 Type 1880

- ❑ MEDIUM GAIN
- ❑ LOW-PROFILE RADOME

The GSM1800 base station antennas are available with 60° or 85° sector coverage. A number of models provide gain & fixed electrical downtilt to exactly suit the location. Superior circuit design coupled with advanced manufacturing techniques guarantee consistent product quality, with excellent intermodulation performance.

### TECHNICAL SPECIFICATION

Frequency	1710-1880MHz
Gain	14dBi
VSWR	1.4:1 typical
Horizontal Beamwidth	60°
Vertical Beamwidth	18°
Fixed Electrical Downtilt	0°
Upper Sidelobe Suppression	>14dB
Front-to-Back Ratio	>25dB
Isolation	25dB
Power Rating	200W
Connectors	2 x 7/16" DIN female
Impedance	50Ω
Dimensions (LxWxD)	590 x 164 x 45 mm
Wind Loading	140N @ 45m/s
Operational Wind Speed	45m/s
Survival Wind Speed	56m/s
Lightning Protection	DC grounded
Weight	2.3kg
Temperature Range	-40°C to +70°C
Bracket Tilt	0°-10° or 10°-20° optional
Bracket Size	To suit pole 48-76mm



INOTEK ANTENNAS LTD

54, Ashdown Road, Chandler's Ford, Eastleigh, Hampshire, SO53 5QJ United Kingdom

Tel: +44 (0) 2380 254289, Fax: +44 (0) 191 3920133, email: sales@inotekantennas.com, www.inotekantennas.com

Inotek Antennas reserve the right to vary in detail from the description and specification in this publication. Issue: 04/07