

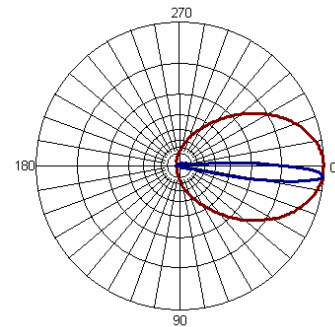
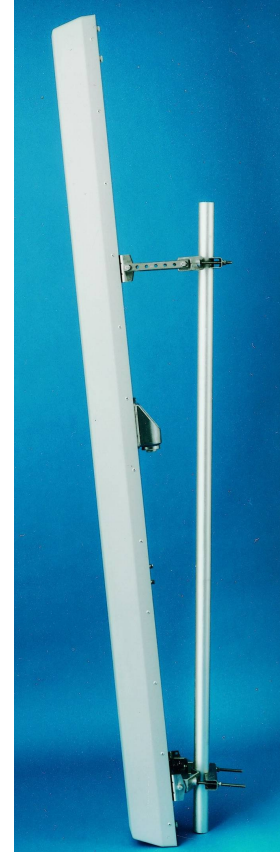
DUAL POLARISED PANEL ANTENNA GSM900 XP/60/17/0, 4 or 10 Type 1728, 1730, 1731, 1733

- ❑ HIGH GAIN
- ❑ SUPPRESSED SIDELOBES

These dual-polarised antennas are intended for sites where high gain is required for maximum cell size. A number of models provide gain & fixed electrical downtilt to exactly suit the location, while the electrical design features highly-suppressed sidelobes to minimise interference with adjacent cells. Superior circuit design coupled with advanced manufacturing techniques guarantee consistent product quality, with excellent intermodulation performance

TECHNICAL SPECIFICATION

Frequency	870-960 MHz
Gain	17dBi
VSWR	1.3:1 max
Horizontal Beamwidth	60°
Vertical Beamwidth	8.9°
Polarisation	+45° and -45°
Fixed electrical downtilt	1728 - 4° 1730 - 10° 1731 - 0° 1733 - 6°
Upper sidelobe suppression	>19dB
Front-to-back ratio	>29dB
Isolation	35dB
Power rating	250W, standard 600W, request when ordering
Connectors	2 x 7/16" DIN female bulkhead
Impedance	50Ω
Dimensions (LxWxD)	2350 x 320 x 125 mm
Wind loading	1095N @ 45m/s
Operational wind speed	45 m/s
Survival wind speed	56 m/s
Lightning Protection	DC grounded
Bracket Size	To suit pole 76-115mm
Bracket Downtilt	0° - 6° in 1° steps
Weight	18kg
Temperature Range	-55°C to +65°C



1728 PLOT

INOTEK ANTENNAS LTD

54, Ashdown Road, Chandler's Ford, Eastleigh, Hampshire, SO53 5QJ United Kingdom

Tel: +44 (0) 2380 254289, Fax: +44 (0) 191 3920133, email: sales@inotekantennas.com, www.inotekantennas.com

Inotek Antennas reserve the right to vary in detail from the description and specification in this publication. Issue: 04/07