

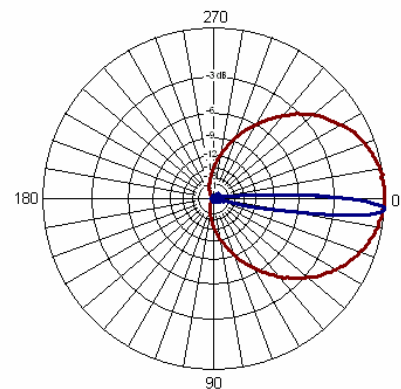
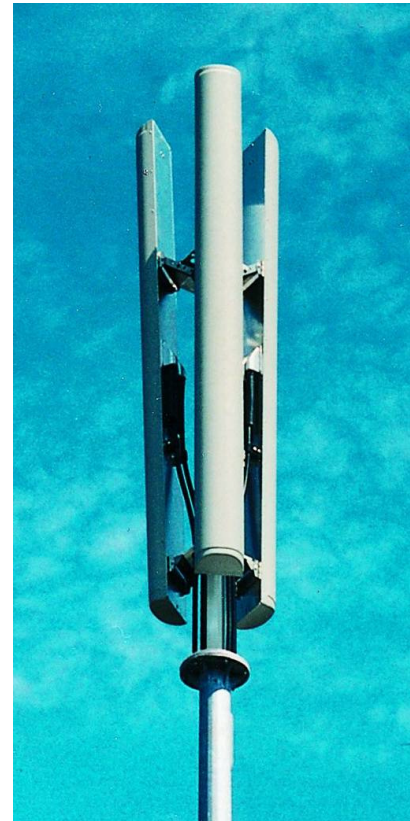
## DUAL POLARISED PANEL ANTENNA GSM900 XP/85/16/4 Type 1721

- ❑ 85° SECTOR COVERAGE
- ❑ SUPPRESSED SIDELOBES

These dual-polarised antennas are intended for sites where wider sector coverage is desired. A number of models provide gain & fixed electrical downtilt to exactly suit the location, while the electrical design features highly-suppressed sidelobes to minimise interference with adjacent cells. Superior circuit design coupled with advanced manufacturing techniques guarantee consistent product quality, with excellent intermodulation performance.

### TECHNICAL SPECIFICATION

Frequency	870-960 MHz
Gain	16dBi
VSWR	1.3:1 max
Horizontal Beamwidth	85°
Vertical Beamwidth	9°
Polarisation	+45° and -45°
Fixed Electrical Downtilt	4°
Upper Sidelobe Suppression	>19dB
Front-to-Back Ratio	>25dB
Isolation	>30dB
Power Rating	500W
Impedance	50Ω
Connectors	2 x 7/16" DIN female bottom
Dimensions (LxWxD)	2330 x 253 x 145 mm
Wind Loading	873N @ 45m/s
Operational Wind Speed	45m/s
Survival Wind Speed	56m/s
Lightning Protection	DC grounded
Bracket Size	Cluster mount (3 sector)
Bracket Downtilt	0°-4° in 2° steps
Weight	15.7 Kg
Temperature Range	-55°C to +65°C



INOTEK ANTENNAS LTD

54, Ashdown Road, Chandler's Ford, Eastleigh, Hampshire, SO53 5QJ United Kingdom

Tel: +44 (0) 2380 254289, Fax: +44 (0) 191 3920133, email: sales@inotekantennas.com, www.inotekantennas.com

Inotek Antennas reserve the right to vary in detail from the description and specification in this publication. Issue: 04/07