



## VERTICALLY POLARISED PANEL ANTENNA GSM900 VP/85/12.7/0 Type 1700

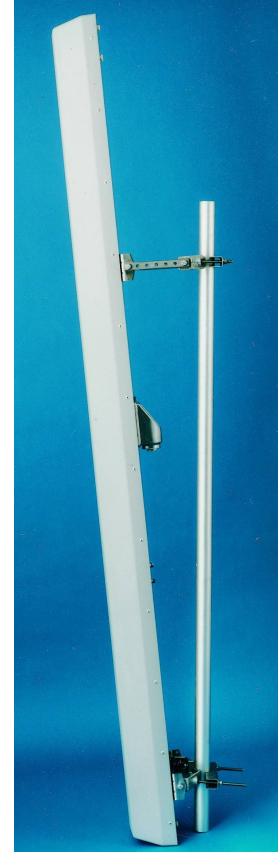
- ❑ 85 DEGREE SECTOR
- ❑ SUPPRESSED SIDELOBES

Vertically polarised panel antennas from Racal have been designed to provide high RF performance, with highly suppressed sidelobes to minimise interference with adjacent cells.

A number of models provide variations in both gain and downtilt to exactly suit the required cell coverage. Superior design coupled with advanced manufacturing techniques guarantee consistent product quality & performance.

### TECHNICAL SPECIFICATION

Frequency	870-960 MHz
Gain	12.7 dBi
VSWR	1.3:1 max
Horizontal Beamwidth	85°
Vertical Beamwidth	11°
Fixed Electrical Downtilt	0°
Upper Sidelobe Suppression	>18dB
Front-to-Back Ratio	>23dB
Power Rating	400W
Connectors	7/16" DIN female bulkhead
Impedance	50Ω
Dimensions (LxWxD)	1850 x 220 x 135 mm
Temperature Range	-30°C to +50°C
Wind Loading	594N @ 45m/s
Operational Wind Speed	45 m/s
Survival Wind Speed	56 m/s
Lightning Protection	DC grounded
Weight	10.5kg
Bracket Size	To suit pole 48-115mm
Bracket Downtilt	+6 to -6°



INOTEK ANTENNAS LTD

54, Ashdown Road, Chandler's Ford, Eastleigh, Hampshire, SO53 5QJ United Kingdom

Tel: +44 (0) 2380 254289, Fax: +44 (0) 191 3920133, email: sales@inotekantennas.com, www.inotekantennas.com

Inotek Antennas reserve the right to vary in detail from the description and specification in this publication. Issue: 04/07