



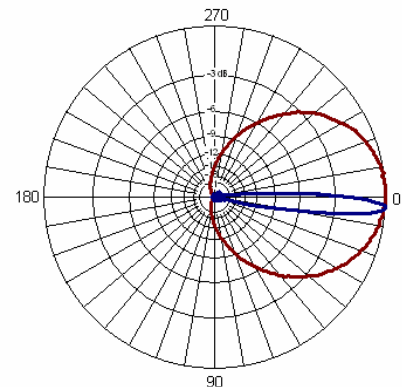
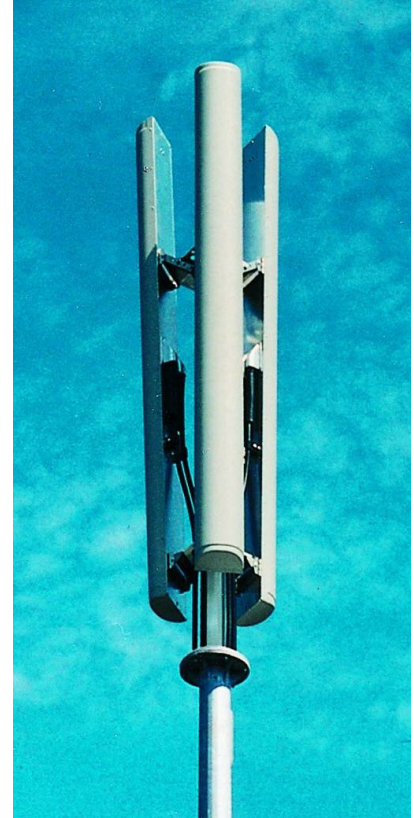
DUAL POLARISED PANEL ANTENNA GSM900 XP/85/16/4 Type 1662

- ❑ 85° SECTOR COVERAGE
- ❑ SUPPRESSED SIDELOBES

These dual-polarised antennas are intended for sites where wider sector coverage is desired. A number of models provide gain & fixed electrical downtilt to exactly suit the location, while the electrical design features highly suppressed sidelobes to minimise interference with adjacent cells. Superior circuit design coupled with advanced manufacturing techniques guarantee consistent product quality, with excellent intermodulation performance.

TECHNICAL SPECIFICATION

Frequency	870-960 MHz
Gain	16dBi
VSWR	1.3:1 max
Horizontal Beamwidth	85°
Vertical Beamwidth	9°
Polarisation	+45° and -45°
Fixed Electrical Downtilt	4°
Upper Sidelobe Suppression	>19dB
Front-to-Back Ratio	>25dB
Isolation	>30dB
Power Rating	500W
Impedance	50Ω
Connectors	2 x 7/16" DIN female centre back
Dimensions (LxWxD)	2330 x 253 x 145 mm
Wind Loading	873N @ 45m/s
Operational Wind Speed	45m/s
Survival Wind Speed	56m/s
Lightning Protection	DC grounded
Bracket Size	To suit pole 48-114mm
Bracket Downtilt	0°-10° in 2° steps
Weight	15.7 Kg
Temperature Range	-55°C to +65°C



INOTEK ANTENNAS LTD

54, Ashdown Road, Chandler's Ford, Eastleigh, Hampshire, SO53 5QJ United Kingdom

Tel: +44 (0) 2380 254289, Fax: +44 (0) 191 3920133, email: sales@inotekantennas.com, www.inotekantennas.com

Inotek Antennas reserve the right to vary in detail from the description and specification in this publication. Issue: 04/07