

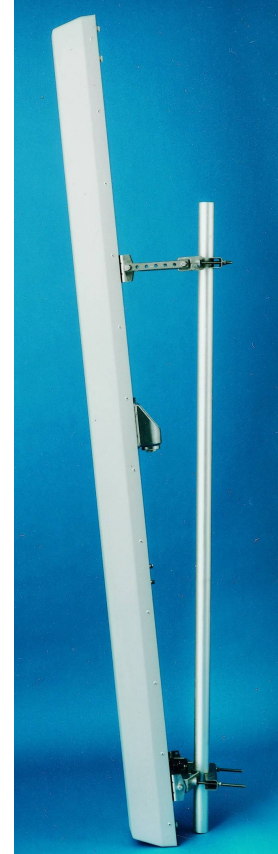


VERTICALLY POLARISED PANEL ANTENNA GSM900 VP/85/16/4 Type 1648

- ❑ 85 DEGREE SECTOR
- ❑ SUPPRESSED SIDELOBES

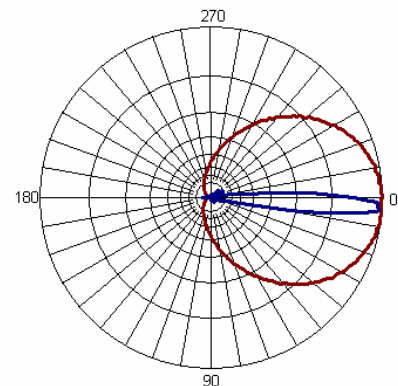
Vertically polarised panel antennas from Racal have been designed to provide high RF performance, with highly suppressed sidelobes to minimise interference with adjacent cells.

A number of models provide variations in both gain and downtilt to exactly suit the required cell coverage. Superior design coupled with advanced manufacturing techniques guarantee consistent product quality & performance.



TECHNICAL SPECIFICATION

Frequency	870-960 MHz
Gain	16 dBi
VSWR	1.3:1 max
Horizontal Beamwidth	85°
Vertical Beamwidth	8°
Fixed Electrical Downtilt	4°
Upper Sidelobe Suppression	>19dB
Front-to-Back Ratio	>25dB
Power Rating	500W
ConnectorS	7/16" DIN female
Impedance	50Ω
Dimensions (LxWxD)	2330 x 220 x 135 mm
Temperature Range	-55°C to +65°C
Wind Loading	729N @ 45m/s
Operational Wind Speed	45 m/s
Survival Wind Speed	56 m/s
Lightning Protection	DC grounded
Weight	12.5kg
Bracket Size	To suit pole 48-115mm
Bracket Downtilt	0 -6° in 1 steps



INOTEK ANTENNAS LTD

54, Ashdown Road, Chandler's Ford, Eastleigh, Hampshire, SO53 5QJ United Kingdom

Tel: +44 (0) 2380 254289, Fax: +44 (0) 191 3920133, email: sales@inotekantennas.com, www.inotekantennas.com

Inotek Antennas reserve the right to vary in detail from the description and specification in this publication. Issue: 04/07

54, Ashdown Road, Chandler's Ford, Eastleigh, Hampshire, SO53 5QJ United Kingdom
Inotek Antennas reserve the right to vary in detail from the description and specification in this publication. Issue: 04/07
Tel: +44 (0) 2380 254289, Fax: +44 (0) 191 3920133, email: sales@inotekantennas.com, www.inotekantennas.com

Inotek Antennas reserve the right to vary in detail from the description and specification in this publication. Issue: 04/07