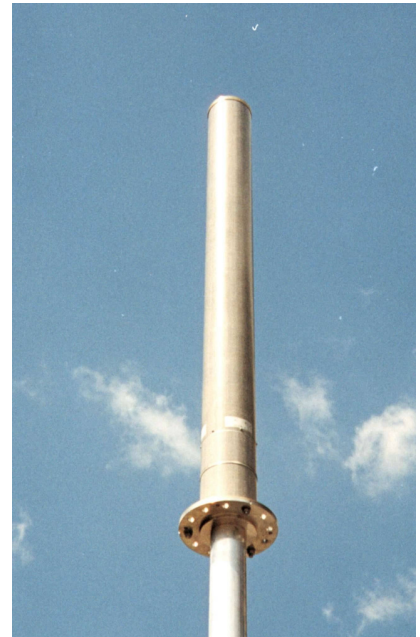




DUAL POLARISED BI-SECTOR ANTENNA GSM1800 XP/2-65/18/2 Type 1030

- ❑ 2 x 65° SECTORS
- ❑ VARIOUS MOUNTING OPTIONS

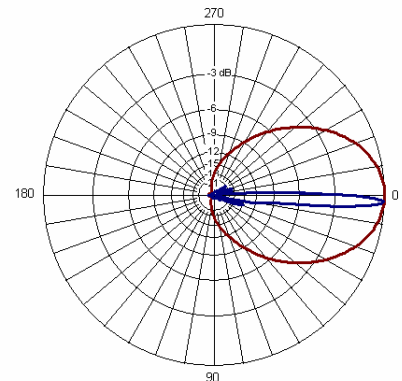
The antenna is based on 2 x 65° antennas mounted back to back within a 167mm diameter radome. This provides a very low profile to ease planning applications. The system can be supplied with mounting hardware to match the user interface. Orientation of the system is carried out by rotation of the complete antenna. Lightning protection is provided via an earth stud & finial.



358MM MOUNTING FLANGE SHOWN

TECHNICAL SPECIFICATION (EACH SECTOR)

Frequency	1710-1880MHz
Gain	18dBi
VSWR	1.4:1 max
Horizontal Beamwidth	65°
Vertical Beamwidth	>5°
Fixed Electrical Downtilt	2°
Upper Sidelobe Suppression	>18dB
Front-to-Back Ratio	>25dB
Isolation	>30dB typical
Power Rating	250W
Connectors	2 x 7/16" DIN (4 in total)
Dimensions (L x Diameter)	1709 x 168 mm
Wind Loading	248N @ 45m/s
Operational Wind Speed	45m/s
Survival Wind Speed	56m/s
Weight	17.0kg
Temperature Range	-55°C to +70°C
Flange	Small, large or inline mount available



2 DEGREE DOWN TILT PLOT

INOTEK ANTENNAS LTD

54, Ashdown Road, Chandler's Ford, Eastleigh, Hampshire, SO53 5QJ United Kingdom

Tel: +44 (0) 2380 254289, Fax: +44 (0) 191 3920133, email: sales@inotekantennas.com, www.inotekantennas.com

Inotek Antennas reserve the right to vary in detail from the description and specification in this publication. Issue: 04/07