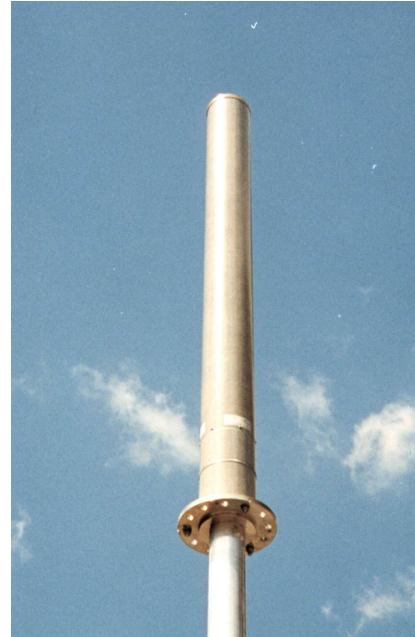




DUAL POLARISED OMNIDIRECTIONAL ANTENNA GSM1800 XP/360/10/3 or 5 Type 103-0002 & 103-0006

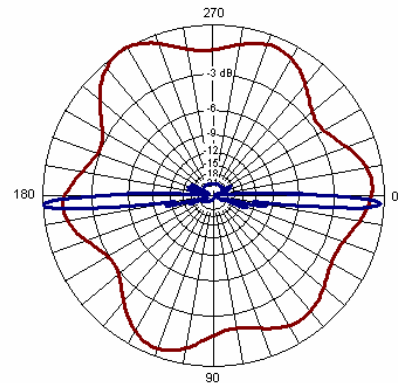
- **MONOPOLE MOUNTING**
- **OMNIDIRECTIONAL**

These models incorporate three individual sector antennas that are internally combined to produce an integrated omnidirectional antenna housed in a single tubular radome. The radome diameter is 167mm, providing a very low profile to ease planning applications. The system is supplied complete with mini -stub tower allowing easy access to the coaxial feeders. Lightning protection is provided via an earthing stud & finial.



TECHNICAL SPECIFICATION

Frequency	1710-1880MHz
Gain	10dBi
VSWR	1.4:1 max
Horizontal Beamwidth	360°
Vertical Beamwidth	6.25°
Fixed Electrical Downtilt	103-0002 - 3° 103-0006 - 5°
Upper Sidelobe Suppression	>18dB
Isolation	30dB typical
Power Rating	250W
Connectors	2 x 7/16" DIN female
Dimensions (LxØ)	1709 x 168mm
Wind Loading	248N @ 45m/s
Operational Wind Speed	45m/s
Survival Wind Speed	56m/s
Weight	18.5kg antenna, 4.5kg interface
Temperature Range	-55°C to +70°C



INOTEK ANTENNAS LTD

54, Ashdown Road, Chandler's Ford, Eastleigh, Hampshire, SO53 5QJ United Kingdom

Tel: +44 (0) 2380 254289, Fax: +44 (0) 191 3920133, email: sales@inotekantennas.com, www.inotekantennas.com

Inotek Antennas reserve the right to vary in detail from the description and specification in this publication. Issue: 04/07