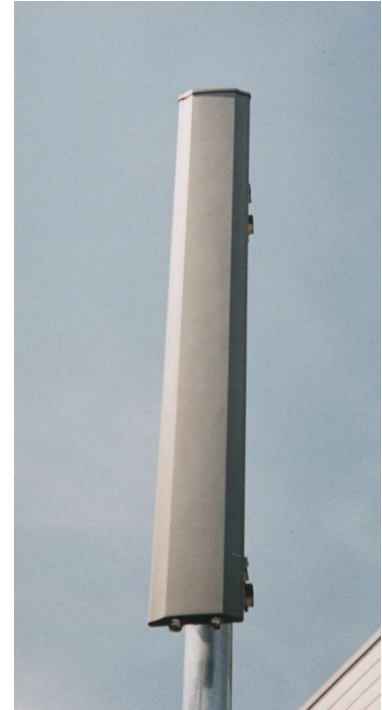




## Dual Polarised Panel Antenna GSM1800 XP/65/18/2 or 5 Type 100-0010/17

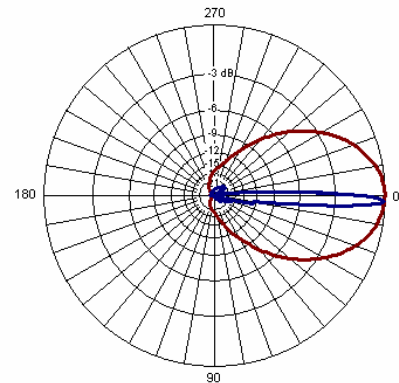
- ❑ HIGH GAIN
- ❑ LOW-PROFILE RADOME

The GSM1800 base station antennas are available with 65 or 85° sector coverage, and include suppressed sidelobes as a standard feature. A number of models provide gain & fixed electrical downtilt to exactly suit the location. Superior circuit design coupled with advanced manufacturing techniques guarantee consistent product quality, with excellent intermodulation performance.



### TECHNICAL SPECIFICATION

Frequency	1710-1880MHz
Gain	18dBi
VSWR	1.4:1 max
Horizontal Beamwidth	65°
Vertical Beamwidth	>5°
Fixed Electrical Downtilt	100-0010 - 2° 100-0017 - 5°
Upper Sidelobe Suppression	>18dB
Front-to-Back Ratio	>25dB
1 <sup>st</sup> Null Fill Below Horizon	20dB below beam peak
Isolation	>30dB typical
Power Rating	250W
Connectors (bottom)	2 x 7/16" DIN female
Dimensions (LxWxD)	1695 x 196 x 39 mm
Wind Loading	339N @ 45m/s
Operational Wind Speed	45m/s
Survival Wind Speed	56m/s
Weight	6.6kg antenna, 4.5kg brackets
Temperature Range	-40°C to +70°C
Bracket Tilt	8° down, 2° up



2 DEGREE DOWN TILT PLOT

INOTEK ANTENNAS LTD

54, Ashdown Road, Chandler's Ford, Eastleigh, Hampshire, SO53 5QJ United Kingdom

Tel: +44 (0) 2380 254289, Fax: +44 (0) 191 3920133, email: sales@inotekantennas.com, www.inotekantennas.com

Inotek Antennas reserve the right to vary in detail from the description and specification in this publication. Issue: 04/07